

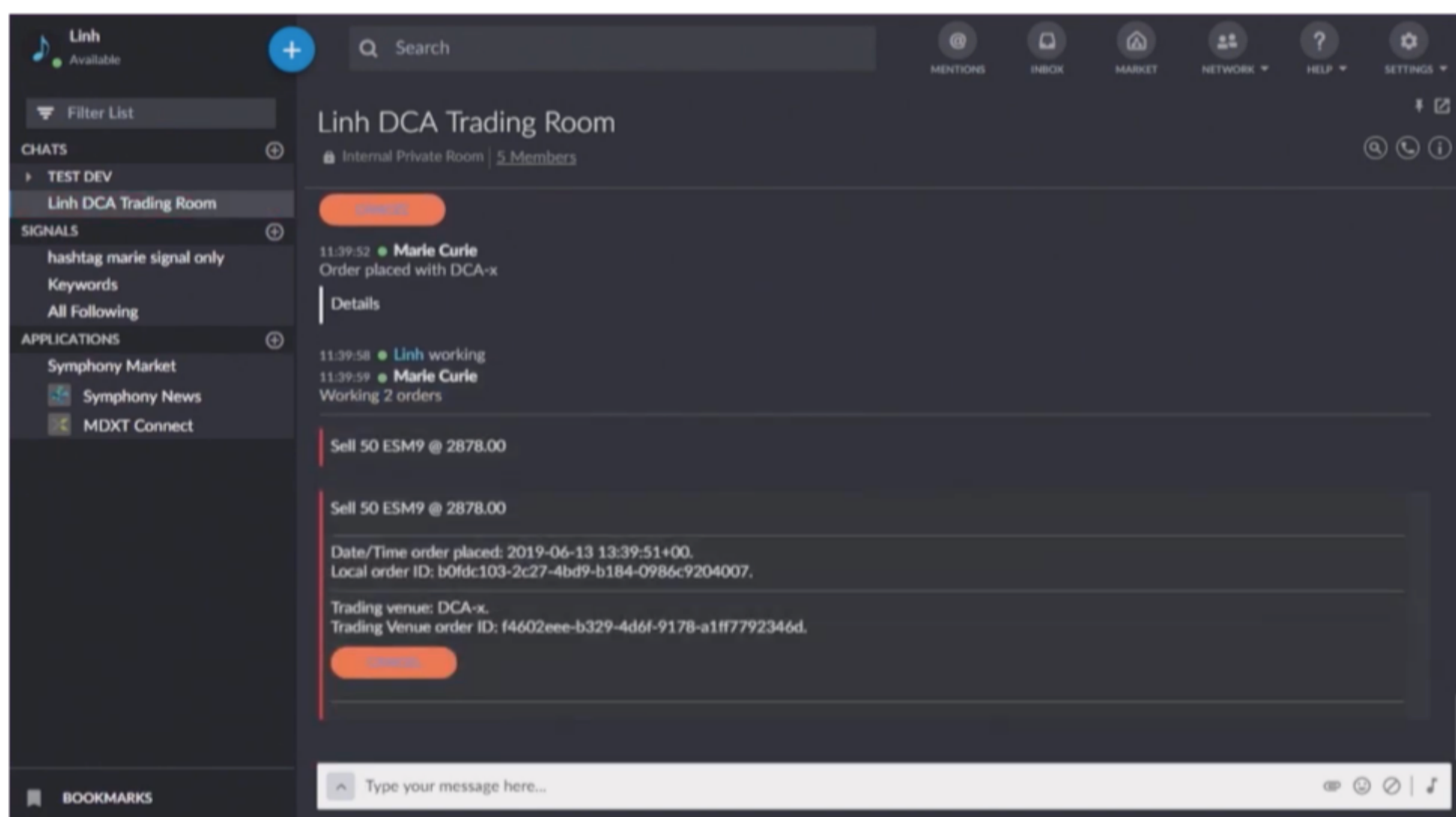
## Announcing the Symphony Innovate 2019 Agenda

Symphony Innovate 2019 is three weeks away! Join over 600 executives and technology experts from around the world to discover how to streamline secure collaboration, connect information systems, and automate workflow across regulated industries. Contact your representative or email [innovate@symphony.com](mailto:innovate@symphony.com) to register.

This year we have an exciting agenda that includes multiple sessions on building contextual intelligence and transforming the trade lifecycle. For the first time, we will also have sessions for our developer community. Attend one of our hands-on workshops or sessions at Innovate 2019 on October 3 in New York City.

Check out the agenda [here](#).

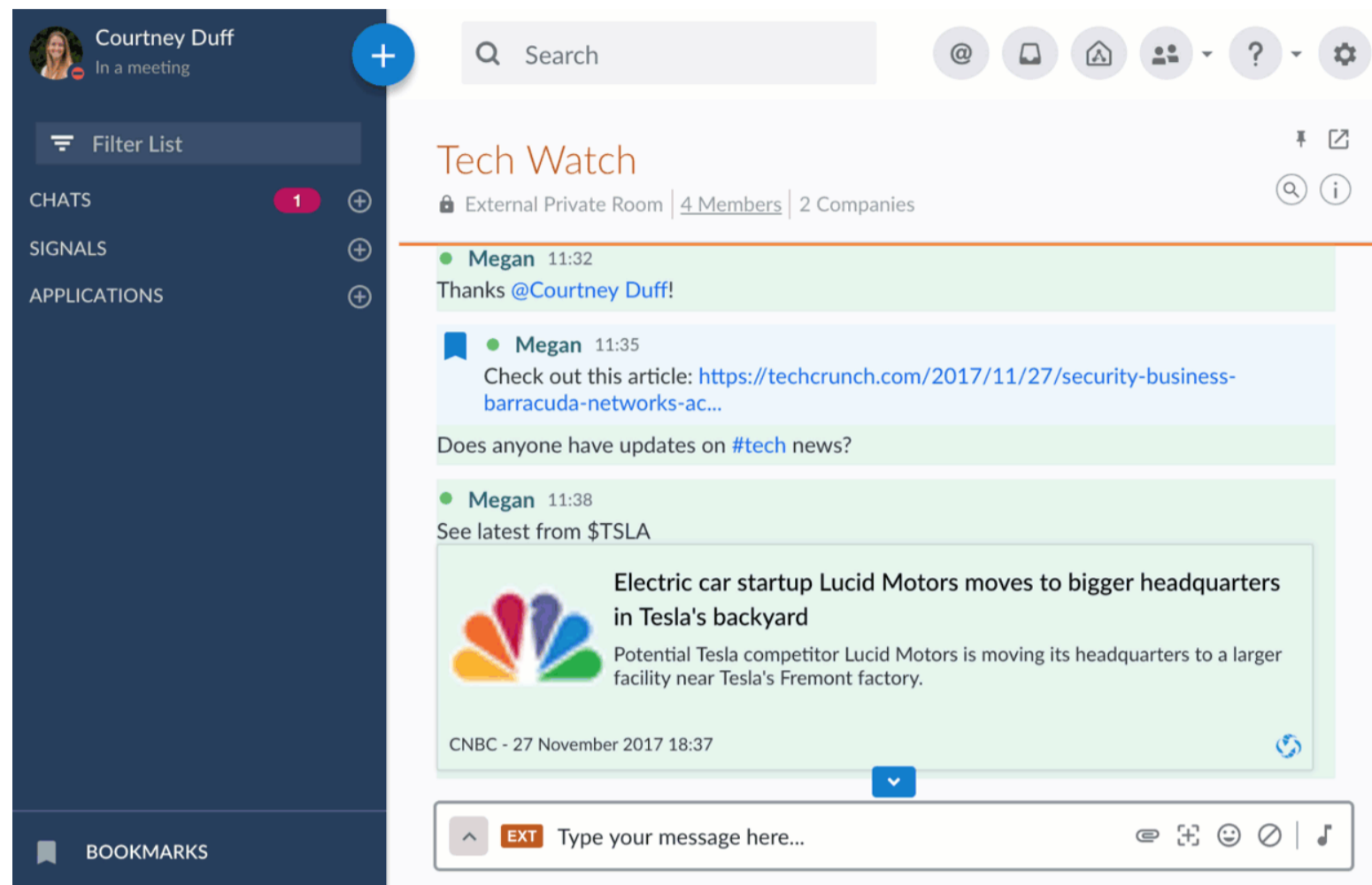
## Get to Know a Bot: Onboard New Clients Quickly with DCA's Rutherford Bot



DCA was recognized as one of the winners of the Symphony Innovation Award at Innovate Asia 2019 in Singapore earlier this year. DCA's Rutherford Bot onboards new clients quickly by setting up a time-based, one-time password for client identity verification. It then communicates verification with DCA's Marie Curie bot, which allows the client to begin trading immediately. Together, these two bots eliminate manual processes prone to human error and significantly reduce the error cost associated to order execution whilst also improving accuracy and efficiency.

Has your firm built a solution that should be recognized? Nominate it for our [Innovation Award](#) today.

## Pro Tip: Keep Conversations in Context with Message Reply



Add context to message replies by including the original message in your response. Message replies can be used to respond directly to a specific message to keep conversations in context, even in busy chat rooms. To use Message replies:

- To send a direct reply, click on the ... in the upper right-hand corner
- Select **Reply**
- Type in your response and click **send**

The message you are replying to will appear in italics above your response. For more tips & tricks, visit our [Help Center](#).

## Symphony Innovate 2019 Hackathons

We are hosting two Symphony Innovate 2019 hackathons:

- [Credit Suisse in London](#), September 12
- [Citi in New York](#), October 16

Build on your secure collaboration platform to extend critical workflows beyond your company walls. Develop scalable, innovative solutions at an upcoming Symphony Hackathon to bring progress and efficiency to your firm. [Register](#) your team today.

## Must See Webinars

**And for the record...**

*Thursday, September 12th*

Join our tech-focused webinar to learn about Symphony's upcoming compliance recording for A/V Meetings and Screen Sharing by VP Collaboration Solutions, Barry Castle. [Register here](#).

### Getting Started

We host monthly training webinars to provide an overview of the platform and demonstrate use cases for specific roles. View our upcoming webinar schedule & watch past events on demand [here](#).

# SYMPHONY

## EXTERNAL COMMUNITY

SEPTEMBER 2019

450,000+ professionals across 405+ firms are part of the Symphony Community:



## What content tags are suggested this week?

Recurring	Current Events	Suggested This Week
-----------	----------------	---------------------

#hawkish #house #global #inflation #jobs  
#pricing #IRAs #millenials #taxes #gains  
#brexit #MIFID

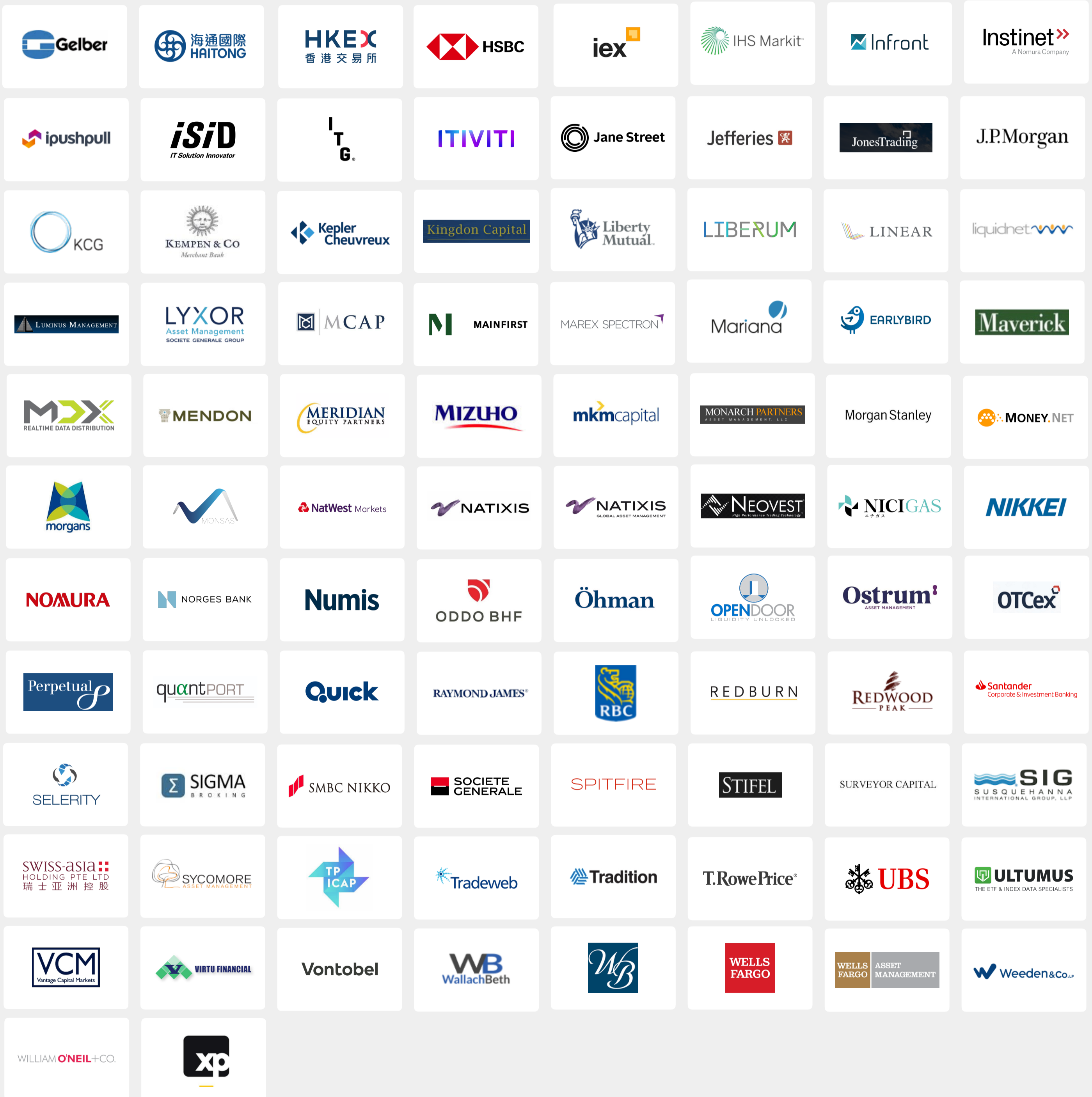
#AI #bitcoin #IOI #LOI #data #regulators  
#digitaltransformation #bigdata #brexiteers

#EU #globaltrading #centralbank  
#taxreforms #RegTech #Russia #innovation  
#digital #twitter #putin #tariffs

# SYMPHONY

## EXTERNAL COMMUNITY

SEPTEMBER 2019



- Live
- Contingency (Select Users, or Upon Request)
- Recently Added (Select Users)
- Recently Added (Full Desk)
- Coming Soon

### EQUITIES

BUY-SIDE	EQUITIES		
	Amers	EMEA	Asia
Alger	●		
Alliance Bernstein	●	●	●
Amundi		●	●
Aptigon Capital	●	●	●
Artisan Partners	●	●	
BNP Paribas AM		●	
Boston Company	●		
Boston Partners	●		
BTG Pactual	○	○	
Challenger			●
Citadel	●	●	●
Comgest		○	
CPP Investment Board	●	●	●
Deerfield	●		
Driehaus Capital Management	●		
DWS	●	●	●
Ebisu Capital			●
Empirical Capital	●		
EFG Bank International		●	●
Exane AM		●	
Colonial First State Investments		●	●
Forsyth Barr			●
Fulcrum AM		●	
GAMA	●	●	●
Global Macro Cycle Partners		●	
Jane Street	●	●	●
Jefferies	●	●	●
Kingdon Capital	●	●	
Liberty Mutual	●		
Luminus Management	●		
Lyxor		●	
Maverick	●		
Mendon Capital	●		
Monarch Partners	●		
Norges Bank	●	●	●
Öhman J:or Fonder		●	
Ostrum AM		●	
Perpetual			●
QuantPort		●	
Redwood Peak			●
Schroders		●	
Spitfire Asset Management			●
Surveyor Capital	●		
Swiss-Asia Financial			●
Sycomore AM		●	
T. Rowe Price	●	●	●
Ultimus		●	●
Vontobel AM	●		
Wells Fargo AM		●	

### EQUITIES

IDBs and Exchange Houses	EQUITIES		
	Amers	EMEA	Asia
AFS Equity & Derivatives B.V.		●	
Bay Crest Partners	●		
BGC	●	●	
BTIG	●		
Hong Kong Exchanges and Clearing Ltd			●
Kyte Broking		●	
Marex Spectron		●	
Meridian Equity Partners	●		
MKM Partners	●		
Morgans Financial			●
OTCex	●	●	
TP ICAP	●	●	●
Tradition	●	●	
Virtu	●	●	●
WallachBeth	●		
Weeden & Co	●		

- Live
- Contingency (Select Users, or Upon Request)
- Recently Added (Select Users)
- Recently Added (Full Desk)
- Coming Soon

### EQUITIES

SELL-SIDE	Amers	EMEA	Asia
ABG Sundal Collier		●	
Arctic Securities	●	●	
Banque Pictet		●	
BofA Merrill Lynch	●	●	●
Barclays	●	●	
Berenberg	●	●	
BNP Paribas	●	●	●
BNY Mellon	●	●	●
BTIG	●		
CIMB			●
Citi	●	●	●
CLSA	●	●	●
CM CIC	●	●	●
Credit Agricole	●	●	●
Credit Suisse	●	●	●
Danske Bank		●	
Davy Group	●	●	●
Deutsche Bank	●	●	●
Dinosaur Merchant Bank		●	
Exane BNP Paribas		●	
Equinet		●	
Global Prime Partners		●	●
Goldman Sachs	●	●	●
Haitong International			●
HSBC	●	●	●
Intertrader		●	
Jefferies	●	●	●
JonesTrading	●		
JP Morgan	●	●	●
Kempen and Co N.V.		●	

### EQUITIES

SELL-SIDE	Amers	EMEA	Asia
Kepler Cheuvreux		●	
Liberum	●	●	
Linear		●	
MainFirst Bank	●	●	
Mariana Capital		●	
MCAP LLC	●		
Mizuho Securities	●		
MKM Partners	●		
Morgan Stanley	●	●	●
Natixis	●	●	●
Nomura	●	●	●
Numis		●	
ODDO BHF		●	
Raymond James	●		
RBC	●	●	●
Redburn	●	●	●
Societe Generale	●	●	●
Stifel	●	●	●
Tradition	●	●	
UBS	●	●	●
VCM		●	
Wells Fargo	●	●	●
William Blair	●		
XP	●		

- Live
- Contingency (Select Users, or Upon Request)
- Recently Added (Select Users)
- Recently Added (Full Desk)
- Coming Soon

BUY-SIDE	FICC		
	Amers	EMEA	Asia
Alliance Bernstein	●	●	●
Amundi		●	●
Ardea IM			●
BNP Paribas AM		○	
BTG Pactual	○	○	
Citadel	●	●	●
CPP Investment Board	●		
DWS	●	●	
Fulcrum AM		○	
GAMA	●	●	●
Gelber	●	●	●
Global Macro Cycle Partners		●	
Jane Street	●	●	●
Jefferies Investment Advisors	●	●	●
JP Morgan AM	●		
Liberty Mutual	●	●	●
Lyxor		●	
Ostrum AM		●	
öhman J:or Fonder		●	
Redwood Peak			●
R & R Commodities	●		
Schroders		●	
Swiss-Asia Financial			●
Sycomore AM		●	
T. Rowe Price	●	●	●
Wells Fargo AM		●	

IDBs and Exchange Houses	FICC		
	Amers	EMEA	Asia
AFS Equity & Derivatives B.V.		●	
Dinosaur Securities	●		
Hong Kong Exchanges and Clearing Ltd			●
OTCex	●	●	
TP ICAP	●	●	●

SELL-SIDE	FICC		
	Amers	EMEA	Asia
ABG Sundal Collier		●	
ANZ	●	●	●
Arctic Securities		●	
Banque Pictet		●	
BofA Merrill Lynch	●	●	●
Barclays	●	●	●
BGC		●	
BNP Paribas	●	●	●
BNY Mellon	●	●	○
BTIG	●		
Citi	●	●	●
Credit Agricole	●	●	●
Commerzbank	●	●	
Credit Suisse	●	●	●
Danske Bank		●	
Davy Group	●	●	●
DCA	●	●	●
Deutsche Bank	●	●	●
Dinosaur Merchant Bank		●	
Global Prime Partners		●	
Goldman Sachs	●	●	●
HSBC	●	●	●
JP Morgan	●	●	●
Kepler Cheuvreux		●	
Linear		●	
Mizuho Securities	●		
Morgan Stanley	●	●	●
Natixis	●	●	●
NatWest Markets		●	
Nomura	●	●	●
ODDO BHF		●	
Raymond James	●		
RBC	●	●	●
Santander CIB		●	
SMBC Nikko			●
Societe Generale	●	●	●
Stifel	●	●	●
UBS	●	●	●
VCM		●	
Wells Fargo	●	●	●
XP	●		

- Live
- Contingency (Select Users, or Upon Request)
- Recently Added (Select Users)
- Recently Added (Full Desk)
- Coming Soon

### OPERATIONS

BUY-SIDE	OPERATIONS		
	Amers	EMEA	Asia
ABC Arbitrage AM		●	
Alliance Bernstein	●	●	●
Aptigon Capital	●		
Amundi		●	
Ardea IM			●
BlackRock	●	●	●
BNP Paribas AM	○	○	○
Brevan Howard	●		●
BTG Pactual	○	○	
DWS	○	○	○
GAMA	●	●	●
Colonial First Time Investments		●	●
Fulcrum AM		●	
Ostrum AM		●	
Redwood Peak			●
Schroders		●	
Spitfire Asset Management			●
Susquehanna Investment Group	●		
Surveyor Capital	●		
T. Rowe Price	●	●	●
Vontobel AM	●		

### OPERATIONS

SELL-SIDE	OPERATIONS		
	Amers	EMEA	Asia
ANZ	●	●	●
BofA Merrill Lynch	●	●	●
Barclays	●	●	●
Berenberg	●	●	
BGC		●	
BNP Paribas	●	●	
BNY Mellon	●	●	○
Citi	●	●	●
Credit Agricole	●	●	●
Commerzbank	●	●	
Crown Jewels	●	●	
DCA	●	●	●
Danske Bank		●	
Davy Group	●	●	●
Deutsche Bank	○	○	○
Dinosaur Merchant Bank		●	
Goldman Sachs	●	●	●
HSBC	●	●	●
Jane Street	●	●	●
JP Morgan	●	●	●
Kepler Cheuvreux		●	
Liberum	●	●	
Mizuho Securities	●		
Nomura	●	●	●
Numis		●	
RBC	●	●	●
Redburn	●	●	●
Société Générale	●	●	●
UBS			●
Wells Fargo	●	●	●
XP	●		

### OPERATIONS

IDBs and Exchange Houses	OPERATIONS		
	Amers	EMEA	Asia
B3	○		

## TECH & PARTNERS

Data Analytics	Market Data/ Content	Financial Ops	EMS/OMS
Alpaca	Blue Fire AI	AccessFintech	CMA
ChartIQ	B3	IHS Markit	FactSet
Fintech Studios	ChartIQ	iSiD	Flextrade
Infront	Dow Jones	DTCC	
KoyFin	FactSet		
TraderWave	IHS Markit		
	Itiviti		
	iPushPull		
	Market Earlybird		
	MDX		
	Nikkei		
	FIS MarketMap		
	Selerity		
	Trovo		
	Quick		