



**SYMPHONY  
INNOVATE**

**20  
19**

**PARTNER SHOWCASE**

# TABLE OF CONTENTS

<a href="#"><u>Access Fintech</u></a>	3
<a href="#"><u>Adaptive</u></a>	3
<a href="#"><u>Alpaca</u></a>	4
<a href="#"><u>Amberdata</u></a>	4
<a href="#"><u>AWS</u></a>	5
<a href="#"><u>Capacity</u></a>	6
<a href="#"><u>ChartIQ</u></a>	7
<a href="#"><u>Daitan</u></a>	8
<a href="#"><u>DTCC</u></a>	9
<a href="#"><u>EFA</u></a>	9
<a href="#"><u>FinCloud</u></a>	10
<a href="#"><u>FinTech Studios</u></a>	10
<a href="#"><u>FlexTrade</u></a>	11
<a href="#"><u>Globanet</u></a>	12
<a href="#"><u>GreenKey Technology</u></a>	12
<a href="#"><u>ipushpull</u></a>	13
<a href="#"><u>Market Early Bird</u></a>	14
<a href="#"><u>Re:infer</u></a>	14
<a href="#"><u>Reason</u></a>	15
<a href="#"><u>Selerity</u></a>	15
<a href="#"><u>ServiceNow</u></a>	16
<a href="#"><u>Smarsh</u></a>	17
<a href="#"><u>Speakerbus</u></a>	18
<a href="#"><u>Taskize</u></a>	19
<a href="#"><u>Terranoha</u></a>	20



## ABOUT

Access Fintech is an innovative risk management service for banks and buy-side firms. The service helps firms track the trade lifecycle and get a true sense of prioritized risk, across an increasing number of systems. Access FinTech brings together fintech providers and in-house technology, orchestrating the interaction of the distributed providers and creating a single visual display of the risk of financial transactions in a global sharable view.

## QUESTIONS?

For more information please visit <https://www.accessfintech.com/>.



## ABOUT

Adaptive is a software consultancy specializing in real-time trading systems. We design, build and operate business-led technology solutions utilizing leading edge technologies.

## QUESTIONS?

For more information please visit <https://weareadaptive.com/>.



## ABOUT

Asia's Leading AI Fintech startup that builds Deep Learning and Big Data technology for financial markets. Providing "AlpacaForecast", a platform that predicts market moves and "AlpacaRadar/Search," a new product that predicts market risk anomaly between cross assets.

## QUESTIONS?

For more information please visit <https://www.alpaca.ai/> .



## ABOUT

Amberdata is a blockchain and digital asset data company. Organizations use market-leading Amberdata to solve their toughest crypto data challenges. Amberdata combines real-time validated blockchain and crypto market data into a unified platform enabling, developers, institutional investors and exchanges to monitor, search and build real-time data-powered applications.

## QUESTIONS?

For more information please visit <https://amberdata.io/>.



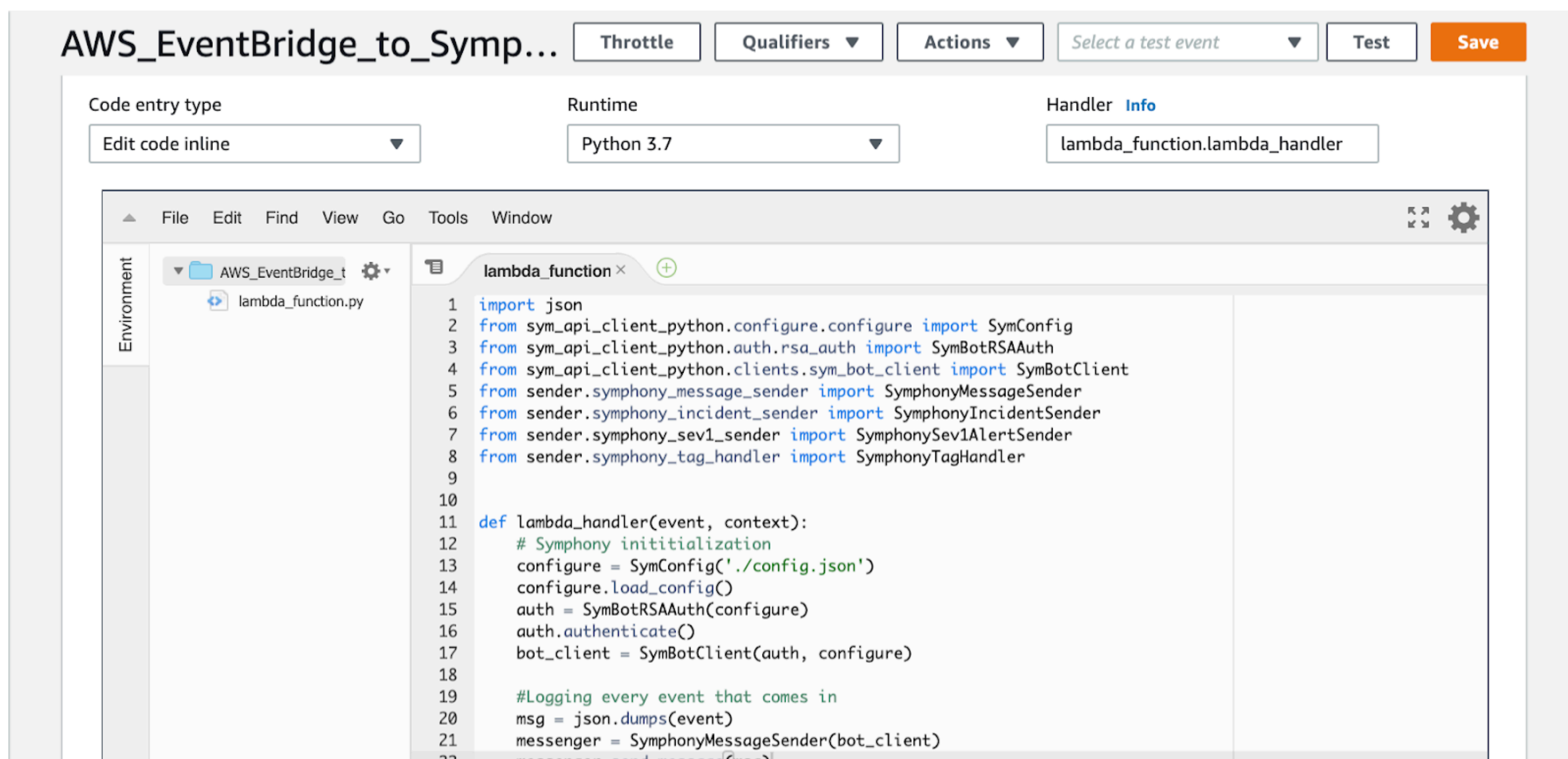
## SYMPHONY INTEGRATION

Learn how to use AWS EventBridge to build an alerting system for a help desk system without using SaaS APIs to pull data and build alerting. Use AWS Lambda to build triggers and workflows in order to alert internal stakeholders on actions associated with support ticket actions and context.

## ABOUT

### Amazon Web Services

For over 12 years, Amazon Web Services has been the world's most comprehensive and broadly adopted cloud platform. AWS services are trusted by millions of active customers around the world to power their infrastructure, make them more agile, and lower costs.



## QUESTIONS?

For more information, download our [ebook](#). You can also visit <https://aws.amazon.com/>.



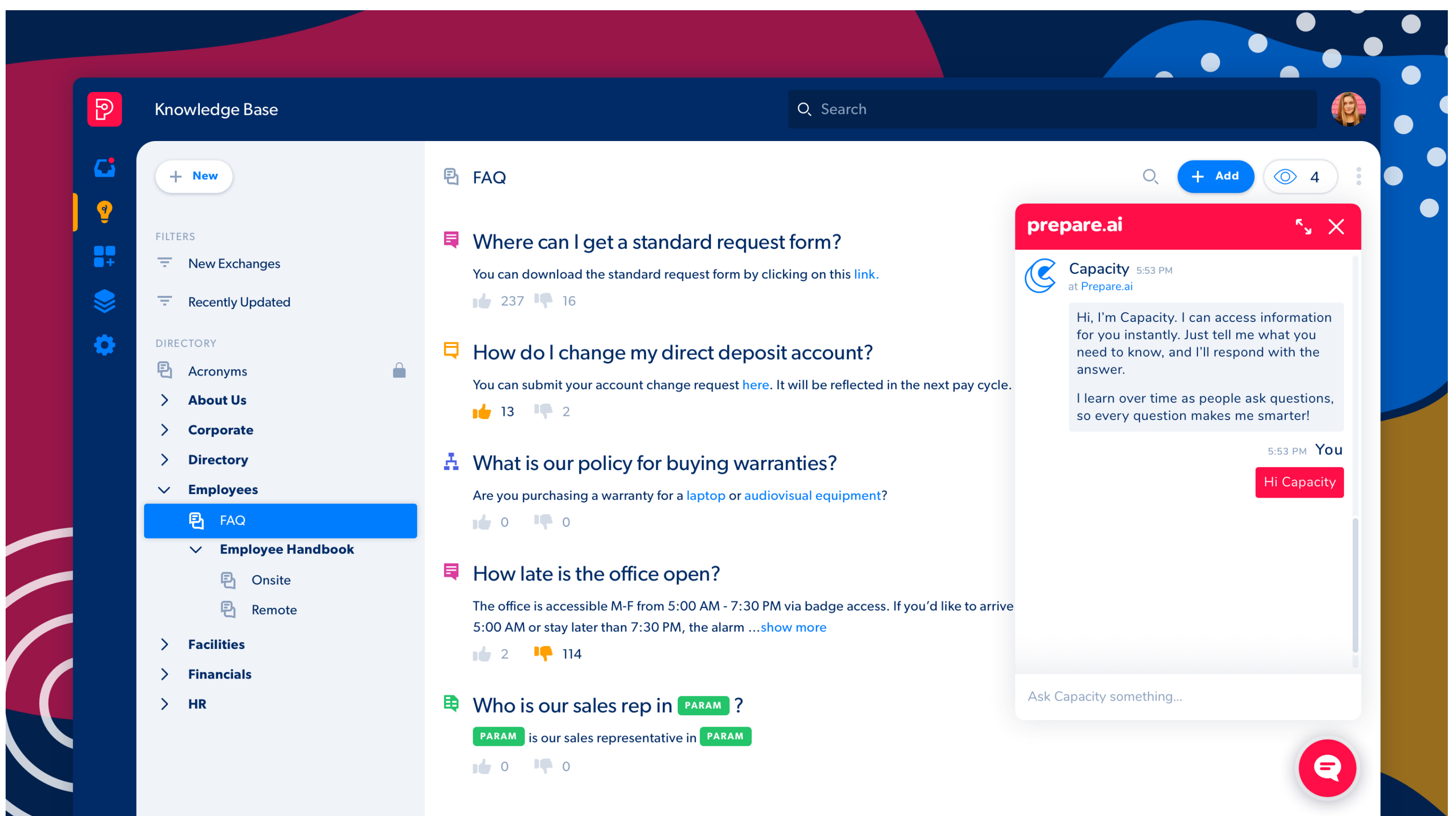


## SYMPHONY INTEGRATION

Capacity will be demoing its state-of-the-art Workflows technology, an AI-powered robotic process automation tool that automates complex financial services tasks. With Workflows, Capacity can onboard new clients, conduct regular knowledge audits, gather real-time team and client feedback, and more—empowering financial services professionals, providing a superior client experience, and generating immediate ROI.

## ABOUT

Capacity is a secure, AI-native knowledge sharing platform for financial services. Capacity connects apps, mines documents, and captures tacit knowledge—making it all instantly accessible via chat. With Capacity, you can painlessly connect all your organizational and product information to our AI-assisted knowledge base. No more searching through out-of-date product guides. No more trying to track down the right person to ask. Just ask Capacity, just like you would a colleague. Welcome to the future of financial services: the knowledge you need to improve margins, at your fingertips.



## QUESTIONS?

For more information please contact Ben Kraus at [ben.kraus@capacity.com](mailto:ben.kraus@capacity.com) or Karaline Venezia at [karaline.venezia@capacity.com](mailto:karaline.venezia@capacity.com) you can also visit [www.capacity.com](http://www.capacity.com).



## SYMPHONY INTEGRATION

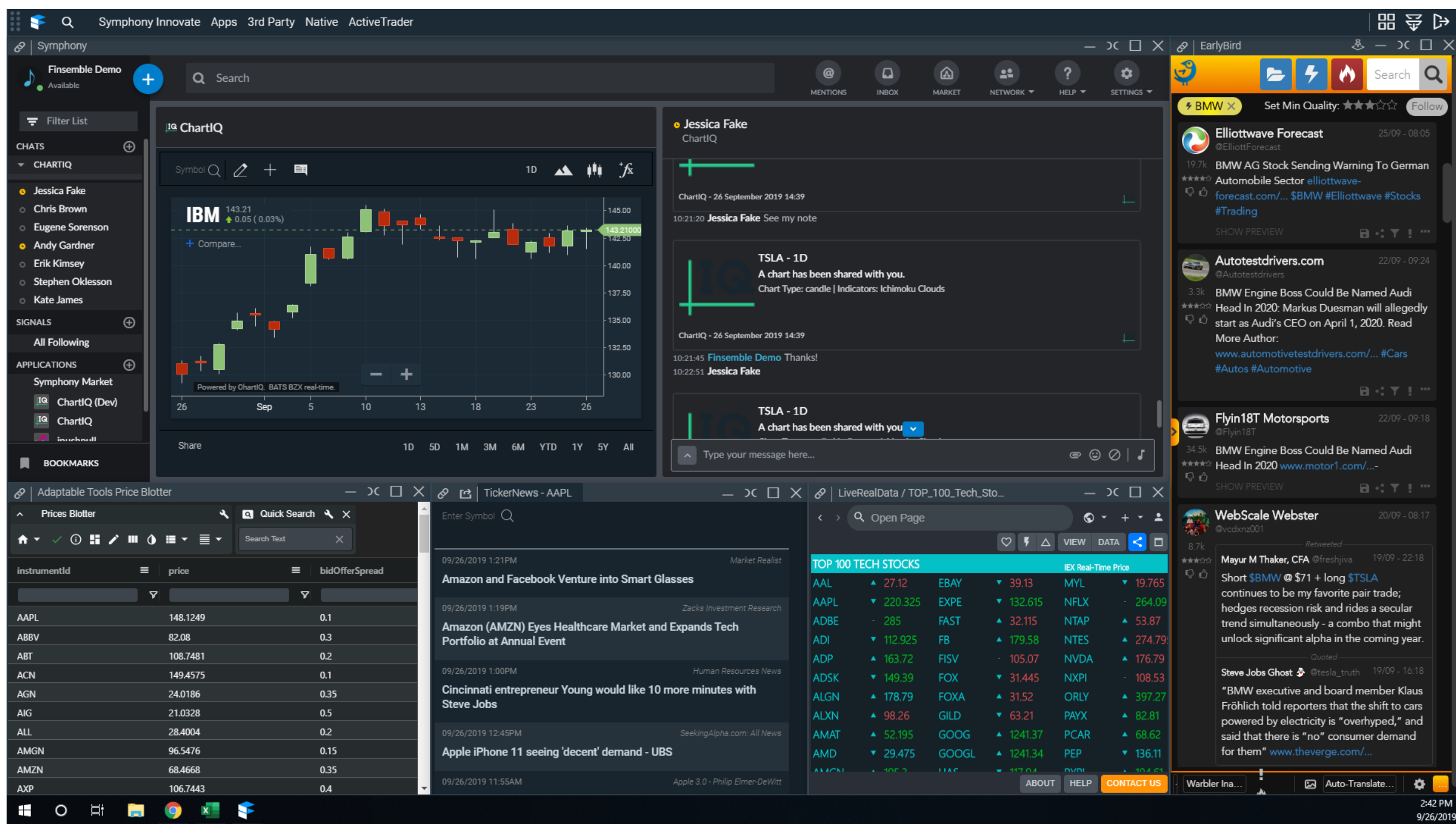
ChartIQ: Leveraging Contextual Data to Take Real-time Action

Symphony users can now employ ChartIQ charts delivered via the Symphony market, with real-time data from over 160 exchanges around the world provided by FIS, including full data entitlements delivered all the way down to the end user. This demo introduces MarketMap for Symphony and its ability to complement and further extend smart desktop platforms like Finsemble, where data, applications, and human communication combine to help us make faster, better, more-informed actions.

## ABOUT

ChartIQ builds financial applications for capital market institutions, investment banks and brokerages. The maker of the industry's most powerful HTML5 financial charts, ChartIQ also delivers Finsemble, a desktop integration platform that links any type of application together to create smart, modern desktops. ChartIQ's solutions are built in current web technologies to help firms innovate faster, saving them time and money.

Founded in 2012, ChartIQ is based in Charlottesville, VA with offices in New York, London and Hong Kong. For more information, please visit: <https://www.chartiq.com>.



## QUESTIONS?

For more information please email [info@chartiq.com](mailto:info@chartiq.com), call 1-800-821-8147 or visit [www.chartiq.com](http://www.chartiq.com)



## SYMPHONY INTEGRATION

Daitan will showcase examples of how we can help Symphony users expand the platform's capabilities through:

- Customized applications and chatbots that enable workflow automations
- Custom integrations to existing and third party systems
- Building Machine Learning modules and operationalize data pipelines into Symphony.

## ABOUT

Since 2004, Daitan clients have trusted us to build core technology, data solutions and software products that scale with real-time performance. As a Symphony partner, Daitan helps maximize the business value of the platform by taking advantage of its extensibility for developing tools and end-to-end workflow automations that increase operational efficiency and lower costs. Clients choose Daitan to deliver quality results, while de-risking projects and accelerating time-to-market.

## QUESTIONS?

For more information please contact Henrique Oliveira, CTO at [holiveira@daitan.com](mailto:holiveira@daitan.com) or Mario Zimmer, Country Manager, Canada at [mariozimmer@daitan.com](mailto:mariozimmer@daitan.com) or Marcus Secato, Software Architect, at [msecato@daitan.com](mailto:msecato@daitan.com).





## ABOUT

With over 45 years of experience, DTCC is the premier post-trade market infrastructure for the global financial services industry. From operating facilities, data centers and offices in 16 countries, DTCC, through its subsidiaries, automates, centralizes and standardizes the processing of financial transactions, mitigating risk, increasing transparency and driving efficiency for thousands of broker/dealers, custodian banks and asset managers. Industry owned and governed, the firm simplifies the complexities of clearing, settlement, asset servicing, data management, data reporting and information services across asset classes, bringing increased security and soundness to financial markets.

## QUESTIONS?

For more information please visit <http://www.dtcc.com/>.



## ABOUT

EFA, a leading FinTech solutions provider. We have been creating investment research software and financial analysis technology for both sell-side and buy-side institutions since 2003. Our mission is to make it easier for our customers to manage, better understand and leverage their financial data and related content.

## QUESTIONS?

For more information please visit <https://www.efa.biz/>.



## ABOUT

Fincloud specializes in Financial Technology for the Capital Markets Industry, and offers a container-based platform for both cloud and on-prem deployment, allowing clients to leverage our expertise in Chatbots, Connectivity and Machine Learning.

Our main product is a Fintech Integration platform with a flexible plugin architecture solving the integration needs of clients in the Capital Markets industry. Our clients include Traditional and Alternative Asset Managers, EMS Vendors, Prime-brokers and Equity Research houses. Our clients have been using the platform to distribute research content via chat systems, provide online query functionality and to auto-tag text content for publishing. We also provide general consulting services to major clients, in both Front-Office systems and Post-Trade securities processing.

## QUESTIONS?

For more information please visit <http://www.fincloud.io>.



## ABOUT

FinTech Studios' cloud platform seamlessly integrates FinTech apps, news, research, financial data and big-data analytics from dozens of cloud partners and millions of websites, online sources and proprietary financial databases in real-time, leveraging advanced machine learning, artificial intelligence and natural language processing (NLP) technology. FinTech Studios was founded in 2014 by Jim Tousignant, the Company's CEO, who previously was co-founder and President of Multex, a leading online research and financial information platform that went public in 1999 and achieved a market cap of \$1.5 billion.

## QUESTIONS?

For more information please visit <https://fintechstudios.com/>.

## SYMPHONY INTEGRATION

Trading teams need to manage multiple portfolios and respond to & execute orders in separate, secure systems. The FlexTRADER Integration with Symphony helps streamline this process while also tracking all trade details to maintain compliance.

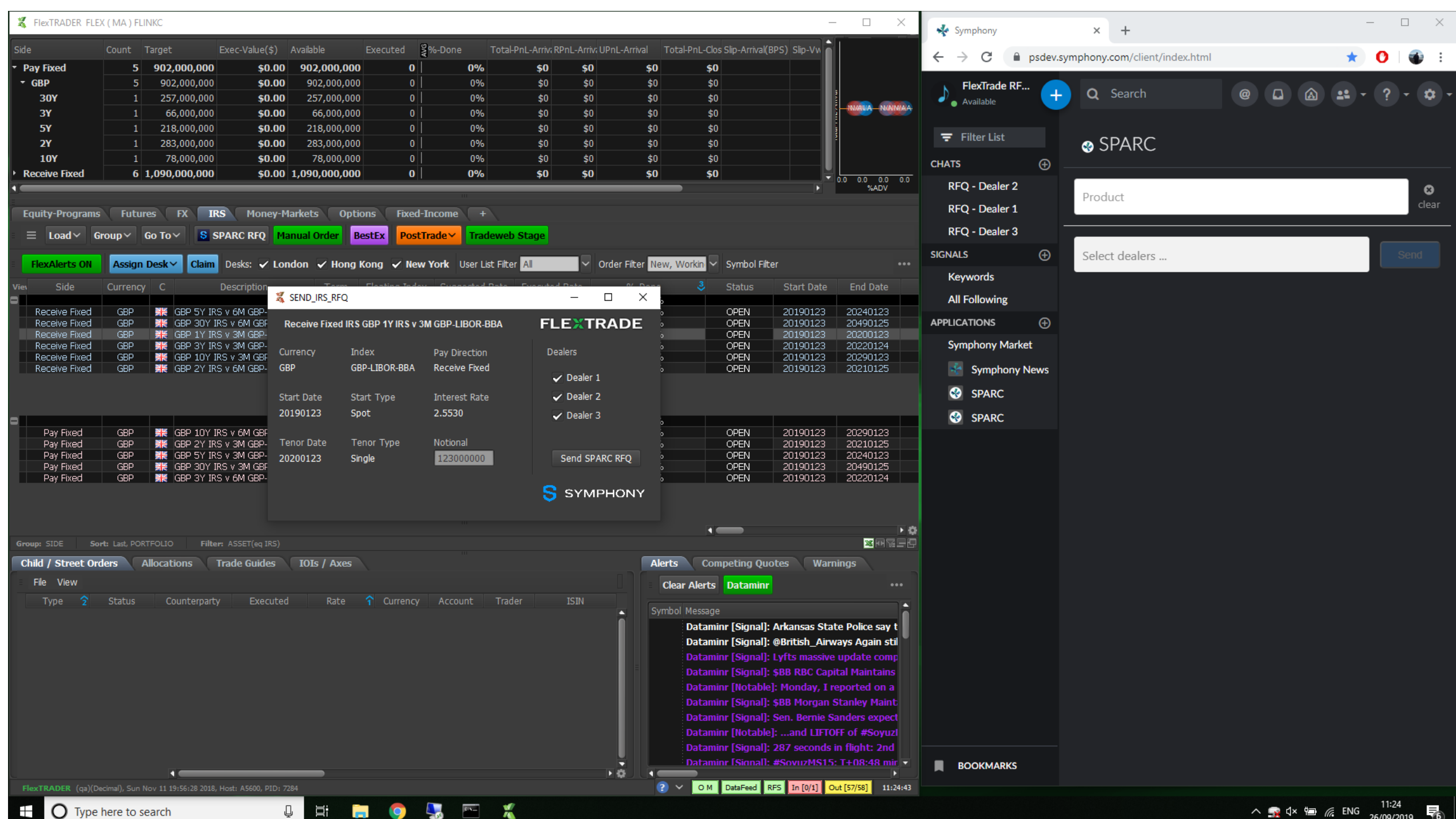
Customize this bot framework to enable your trading teams to:

- Initiate RFQ's directly from FlexTRADER through Symphony SPARC
- Query FlexTRADER EMS for order progress and performance
- Receive and respond to portfolio manager instructions in real time
- Scrape axe data from multiple chats
- Save time while facilitating compliance with MiFID II

Contact your Symphony Account Manager or FlexTrade representative for information on how to configure the integration.

## ABOUT

FlexTrade Systems is the global leader in high-performance execution management and order management systems for equities, foreign exchange, options, futures and fixed income. We partner with our clients to bring their expertise and workflows to life.



## QUESTIONS?

For more information please contact Andy Mahoney at [andrew.mahoney@flextrade.com](mailto:andrew.mahoney@flextrade.com) or visit [flextrade.com](http://flextrade.com).



## ABOUT

Founded in 1996, Globanet is a pioneer in eDiscovery, compliance and information governance solutions. Globanet's portfolio of proprietary enterprise software include Globanet Merge1™, Globanet Migrate™, Globanet Classify™ and Globanet Balance™. Globanet also provides a broad range of eDiscovery, migration and compliance services including system configuration and installation, data migrations and archiving platform health checks.

## QUESTIONS?

For more information please visit <https://www.globanet.com/>.



## SYMPHONY INTEGRATION

GreenKey Technologies will be showcasing real-time data Insights through Voice and Natural Language Processing.

## ABOUT

GreenKey Technologies (GK) develops natural language processing technology that structures voice and chat data while powering automation and insights for banks and trading firms. GK is based in Chicago with offices in New York and London.

## QUESTIONS?

For more information please contact Dr. Tejas Shastry, Chief Data Scientist, of GreenKey Technologies at [tejas@greenkeytech.com](mailto:tejas@greenkeytech.com).





## SYMPHONY INTEGRATION

ipushpull will be showcasing pre-trade workflows around axes and IOI's, post-trade workflows around fails management and Data-as-a-Service bots pulling data from databases, spreadsheets and APIs. The company will also be launching the ipushpull bot framework and workflow builder which allows rapid delivery of custom apps and bots.

## ABOUT

ipushpull is a powerful real-time data sharing and workflow automation platform. Used externally between sell-side and buy-side or internally between front and back office, ipushpull improves workflow efficiency by connecting desktop applications, Bots, proprietary platforms and 3rd party services over a single unified layer and delivering custom workflow automation solutions directly into environments like Symphony.

No emails, no files, no code, no hassle.

Demo1  
Available

+

Search

@ MENTIONS
 INBOX
 MARKET
 NETWORK
 HELP
 SETTINGS

Filter List

CHATS 22
SIGNALS
APPLICATIONS

ipushpull Trade Fails

DASHBOARD TRADES CLAIMS PAY RECEIVE

DEMO

		Trade Status	Trade Id	Claim Type	Customer Group	Customer Name	Entity Id	Trader	External	Trade Date	P/S	Asset	CUSIP	Par	Principal	Interest	Total Money	Price
*	*	CHAT	Matched	Receive	IM B	IM B - Fund 123	BDNY	AB12	50107	03-Jan-2019	P	TSY	912810SE9	\$30,000,000.00	\$30,000,000.00	\$139,848.07	\$30,139,848.07	\$100.00
*	*	CHAT	Matched	Receive	IM B	IM B - Fund 123	BDNY	AB12	609039	04-Jan-2019	P	TSY	912810SE9	\$25,000,000.00	\$25,000,000.00	\$132,855.66	\$25,132,855.66	\$100.00
*	*	CHAT	Matched	Receive	IM B	IM B - Fund 123	BDNY	AB12	84083	03-Jan-2019	P	TSY	912810SE9	\$50,000,000.00	\$50,000,000.00	\$251,726.52	\$50,251,726.52	\$100.00
*	*	CHAT	Matched	Pay	IM B	IM B - Fund EMG	BDNY	AB15	58877	03-Jan-2019	S	TSY	9128285S5	\$40,000,000.00	\$40,000,000.00	\$8,287.29	\$40,008,287.29	\$100.00
*	*	CHAT	Matched	Receive	IM B	IM B - Fund EMG	BDNY	AB15	371	04-Jan-2019	P	TSY	9128285S5	\$100,000,000.00	\$100,000,000.00	\$48,342.54	\$100,048,342.50	\$100.00
*	*	CHAT	Matched	Pay	IM B	IM B - Fund EMG	BDNY	AB15	251637	03-Jan-2019	S	TSY	9128285S5	\$15,000,000.00	\$15,000,000.00	\$7,251.38	\$15,007,251.38	\$100.00
*	*	CHAT	Matched	Receive	IM B	IM B - Fund AGF	BDNY	AB15	914	03-Jan-2019	P	TSY	9128285M8	\$45,000,000.00	\$45,000,000.00	\$194,233.43	\$45,194,233.43	\$100.00
*	*	CHAT	Matched	Receive	IM B	IM B - Fund AGF	BDNY	AB15	6131	03-Jan-2019	P	TSY	9128285M8	\$50,000,000.00	\$50,000,000.00	\$228,763.81	\$50,228,763.81	\$100.00
*	*	CHAT	Matched	Receive	IM B	IM B - Fund AGF	BDNY	AB15	400398	03-Jan-2019	P	TSY	9128285M8	\$75,000,000.00	\$75,000,000.00	\$317,247.93	\$75,317,247.93	\$100.00
*	*	CHAT	Matched	Receive	IM B	IM B - Fund GM	BDNY	MBS15	1216627	03-Jan-2019	P	AGY/MBS	3138EK3G8	\$100,000,000.00	\$47,818,508.00	\$46,490.22	\$47,864,998.22	\$100.00
*	*	CHAT	Potential	Receive	IM B	IM B - Fund GM	BDNY	MBS15	102618	03-Jan-2019	P	AGY/MBS	3138EK3G8	\$75,000,000.00	\$35,863,881.00	\$31,380.90	\$35,895,261.90	\$100.00
*	*	CHAT	Matched	Receive	IM B	IM B - Fund GM	BDNY	MBS15	124255	03-Jan-2019	P	AGY/MBS	3138EK3G8	\$50,000,000.00	\$23,909,254.00	\$13,947.06	\$23,923,201.06	\$100.00
*	*	CHAT	Potential	Receive	IM B	IM B - Fund MRJJ	BDNY	MBS15	873755	03-Jan-2019	P	AGY/MBS	36179TGS8	\$40,000,000.00	\$36,180,511.20	\$21,105.30	\$36,201,616.50	\$100.00
*	*	CHAT	Matched	Pay	IM B	IM B - Fund MRJJ	BDNY	MBS15	7848295	03-Jan-2019	S	AGY/MBS	36179TGS8	\$60,000,000.00	\$54,270,766.80	\$13,567.69	\$54,284,334.49	\$100.00
*	*	CHAT	Matched	Pay	IM B	IM B - Fund MRJJ	BDNY	MBS15	821	03-Jan-2019	S	AGY/MBS	36179TGS8	\$35,000,000.00	\$31,657,947.30	\$342,096.11	\$32,000,043.41	\$100.00
*	*	CHAT	Matched	Receive	IM B	IM B - Fund MRJJ	BDNY	MBS15	84454	03-Jan-2019	S	TSY	9128285M8	\$45,000,000.00	\$45,000,000.00	\$194,233.43	\$45,194,233.43	\$100.00

ipushpull

ipushpull / SymphonyDemo / Workflow

sympho GLOBAL PAGES ▾ NEW ▾

AUTOSAVE VIEW DATA TOOLS SHARE

Task #	Description	Status	When Updated	Who Updated	Owner
1	Prepare presentation	In Progress	08:24:21	Matt	Dan
2	Read security documentation	To Do			Matt
3	Complete video	Done	08:24:26	Matt	David
4	Deployment next steps	Done	08:25:17	Matt	Dan
5	Prioritise projects	In Progress	08:24:49	Matt	Dan
6	Test App	To Do			Matt
7	Collate requests	In Progress	08:25:08	Matt	Matt

Workflow Demo
Internal Private Room | 7 Members

Task 5 'Prioritise projects' Updated by @Demo1 to In Progress 🟡

09:24:50 o ippp

Task 1 'Prepare presentation' Updated by @Demo1 to In Progress 🟡

09:24:51 o ippp

Task 3 'Complete video' Updated by @Demo1 to Done 🟢

09:25:08 o ippp

Task 7 'Collate requests' Updated by

## QUESTIONS?

For more information please contact Matthew Cheung, CEO at [Matthew.cheung@ipushpull.com](mailto:Matthew.cheung@ipushpull.com) or visit [www.ipushpull.com](http://www.ipushpull.com).



## ABOUT

EarlyBird is Safe, Smart Twitter for Finance. Follow anyone anonymously, use AI-powered SmartTracks to deep-dive when other sources aren't giving the full story, and stay informed with pre-built financial, economic and political collections. It's read-only, so there's no Tweeting, no direct messaging and all received Tweets are recorded for compliance purposes.

## QUESTIONS?

For more information please visit <https://www.marketearlybird.com/>.

---

# reinfer

## ABOUT

re:infer's deep learning platform works across pre- and post-trade operations, converting unstructured communications (emails, calls, chats, notes) into structured data in real-time, allowing for analytics and process automation. In the pre-trade environment, re:infer automatically discovers market information, client intent, sentiment, trends and hidden relationships that translate into trading signals for front-office teams. In post-trade operations, re:infer discovers manual processes — quantifying failures, highlighting root-cause drivers of demand, detecting incorrect reference data and enabling straight-through-processing of requests in natural language.

## QUESTIONS?

For more information please visit <https://reinfer.io/>.

# Reason.

## ABOUT

Reason is a strategic, professional services partner to Symphony, working with Symphony Market Solutions and platform users to identify, design and create products on the Symphony platform. Our deep understanding of Symphony's APIs, SDKs, and development environments, coupled with our understanding of the financial technology environment, means we know what considerations are needed for successful product releases. Our Symphony products range from internal workflow management tooling (Symphony SPARC), content distribution (UBS Live Desk), trade reconciliation (ANZ Trade Butler), and development tooling integrations (Jira, BitBucket & Bamboo).

## QUESTIONS?

For more information please visit <https://reason.co/>.



## SYMPHONY INTEGRATION

Selerity will be presenting two of its flagship products for financial workflow automation: Selerity Context for market commentary & research distribution, and the Selerity Private Context Engine (PCE) for credit sales & trading.

## ABOUT

Selerity is a financial technology company using proprietary A.I. to deliver content and data solutions designed to automate inefficient workflows in finance. The Company's clients range from sophisticated asset management firms and banks on Wall Street to innovative media and technology companies serving retail investors. Selerity's flagship product, Selerity Context, offers contextual search solutions for the capital markets and digital wealth industries, while the Company's Private Context Engine (PCE) analyzes digital communications to power workflow automation for finance professionals

## QUESTIONS?

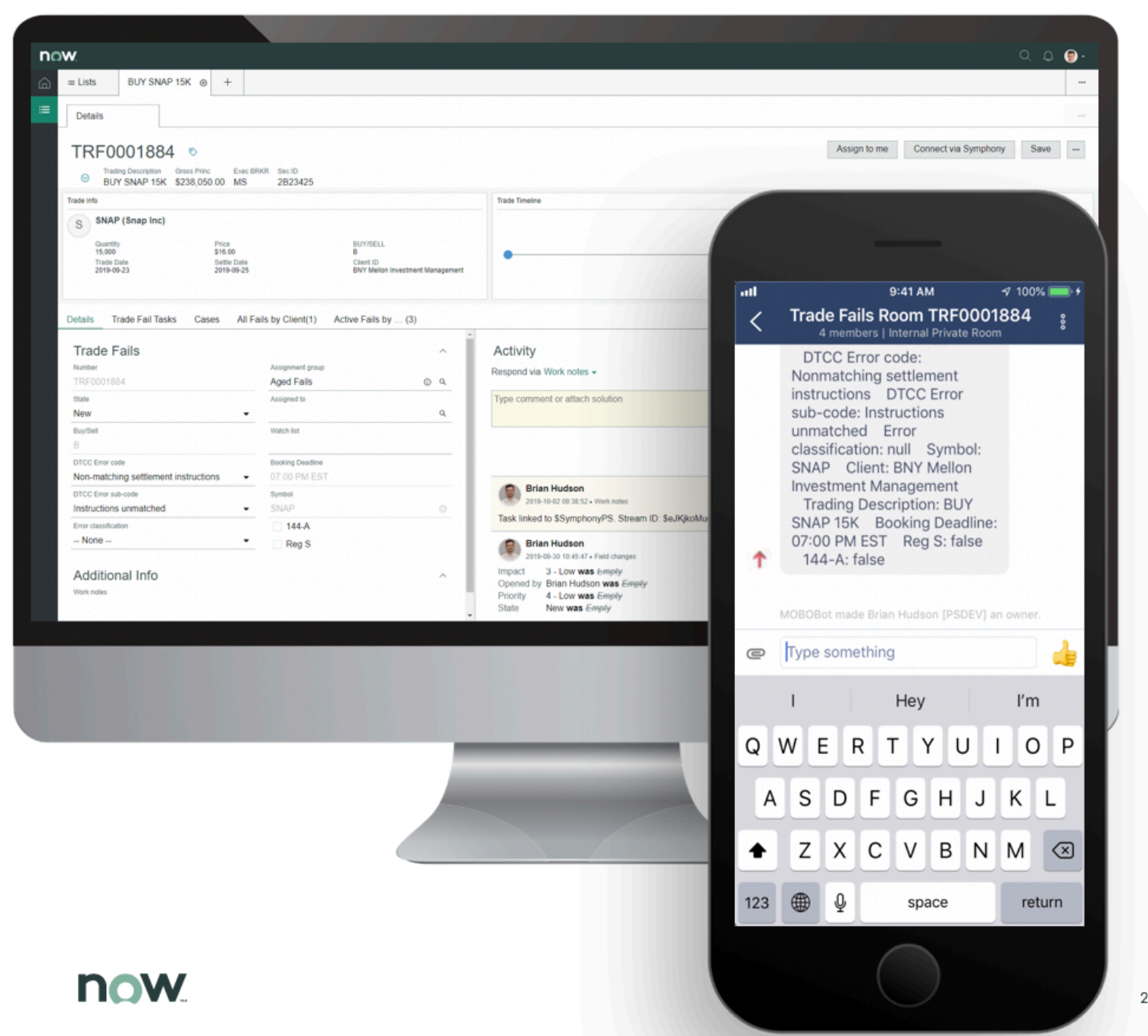
For more information please contact Lindsay Hemings at [Lindsay.hemings@selerityinc.com](mailto:Lindsay.hemings@selerityinc.com) or 646-655-0719 you can also visit [selerityinc.com](https://selerityinc.com).



## ABOUT

ServiceNow (NYSE: NOW) is the fastest-growing enterprise cloud software company in the world above \$1 billion. Founded in 2004 with the goal of making work easier for people, ServiceNow is making the world of work, work better for people. Our cloud-based platform and solutions deliver digital workflows that create great experiences and unlock productivity to approximately 5,400 enterprise customers worldwide, including almost 75% of the Fortune 500. For more information, visit [www.servicenow.com](http://www.servicenow.com).

## The Power of ServiceNow with Symphony



**Collaborate real-time** around IT incidents and business processes in your channel of choice

**Two-way integration** that keeps Symphony users updated on developments in ServiceNow

**Documents, chats and case history** brought together in one place

**Engage all key functions** across your firm from IT to HR to Front and Middle Office

## QUESTIONS?

For more information please visit <https://www.servicenow.com/solutions/industry/financial-services.html>.





## ABOUT

Smarsh helps financial services organizations get ahead – and stay ahead – of the risk within their electronic communications. Smarsh has established the industry standard for the efficient review and production of content from the diverse range of channels that organizations now use to communicate. With innovative capture, archiving and monitoring solutions that extend across the industry’s widest breadth of channels, customers can leverage the productivity benefits of email, social media, mobile/text messaging, instant messaging/collaboration, websites and voice while efficiently strengthening their compliance and e-discovery initiatives. A global client base, including the top 10 banks in the United States and the largest banks in Europe, Canada and Asia, manages billions of conversations each month with the Smarsh Connected Suite.

## QUESTIONS?

For more information please visit <https://www.smarsh.com/>.



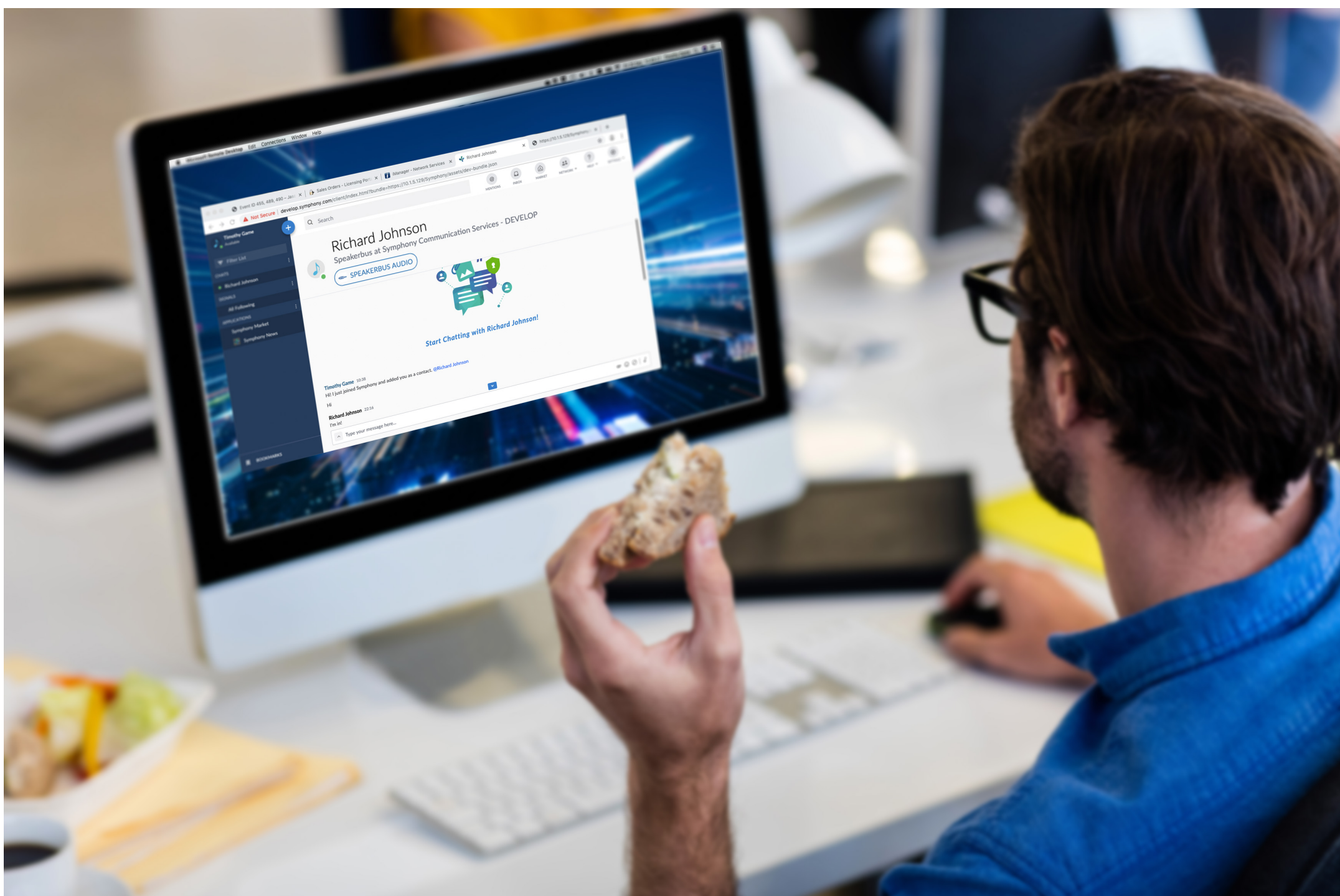
## SYMPHONY INTEGRATION

The Speakerbus Symphony Marketplace application will differentiate Speakerbus from all other trader voice providers. As IM/Chat is critical to the banking and trading community, this new functionality will introduce a simple one-click to initiate voice connection to their chat counterpart. This improves on the trading experience which typically requires the Symphony user to enter a number on a telephone or intercom keypad.

This application uses a Symphony development toolkit and the Speakerbus CTI application to control Speakerbus endpoints including the iTurret Dealerboard and ARIA Soft Client. Symphony users using this application will benefit from enhanced performance and productivity, making every connection worth more.

## ABOUT

Speakerbus leads the field in creating and delivering world-class, innovative, mission critical voice solutions to global Fortune 1000 corporations within the financial services & command sectors. We provide right size, resilient, high availability solutions, with simplified management and enhanced control from one central location. The iSeries solutions help clients leverage & maximize existing investment in unified communications, voice recording & WAN infrastructure, with no hidden cloud network or service costs. Our client base spans 50,000+ users in over 60 countries. [www.speakerbus.com](http://www.speakerbus.com)



## QUESTIONS?

For more information please contact Nicole D'Antuono, Senior Director – Americas, at [nicole.DAntuono@speakerbus.com](mailto:nicole.DAntuono@speakerbus.com) or Andy Wodhams, CEO & Founder, at [andy.Wodhams@speakerbus.com](mailto:andy.Wodhams@speakerbus.com).





## SYMPHONY INTEGRATION

Taskize has been integrated with Symphony for over a year and allows operational staff using Taskize to reach out to Symphony users for query resolution in an efficient way that ensures data security is maintained. The Taskize / Symphony partnership will extend to offer clients a more integrated solution to allow Symphony users to leverage the specialist inter-company workflows of Taskize.

## ABOUT

Taskize helps financial industry operations by enabling clients, colleagues, and counterparties to securely resolve queries and exceptions efficiently across firms. Taskize's unique Smart Directory™ enables individuals to work with the right people, in the right roles, in the right firms to resolve problems in a timely and compliant manner. Users of Taskize are seeing up to a 90% reduction in email for operational queries, up to a 70% reduction in resolution time and a 300% increase in productivity. Founded in 2012 by the creator of open standard messaging infrastructure for capital markets, Taskize is privately owned and backed by Euroclear.

+ Corie Costello

New Bubble

My Bubbles 2

In Progress 2

Pending

Resolved

Cancelled

My Archive

Unassigned 1

All Bubbles

In Progress

Pending

Resolved

Cancelled

Unmatched instruction  
JKKJCC Pending  
External

Seller - SELL123  
Buyer - BUY123  
CSD - CSD123

Journal

Parties

Attributes

Attachments

Links

Kyla C requested a participant from CSD Settlements to represent CSD

A representative will join momentarily

Luke M has joined from CSD Settlements to represent CSD

09-Sep  
19:02  
19:02  
19:02

Luke M Settlements CSD123  
Hi Corie & Kyla, you are now within the extension period of this transaction, please aim to resolve the issue and I will communicate the relevant fines.

Luke M took the flag from Buyer

Hi, I am now placing this transaction on hold and initiating the buy-in process

Corie C took the flag from CSD

Corie C marked the Issue as Pending

Hi all, please see attached the finalised buy-in details

Attachment Transaction details - G245FSHL.pdf version 1

Unmatched instruction - buy-in  
N9Z2UN In Progress  
External

Buyer - BUY123  
Buy In Agent - BUYIN123

Journal

Parties

Attributes

Attachments

Links

Lashawnda A has joined from Buy In Agent Settlements to represent Buy In Agent

Lashawnda A now holds the flag

Hi, I have an urgent requirement for you to buy-in this trade please. Please see the transaction details.

Attachment Transaction details - GT445GLVC.pdf version 1

09-Sep  
19:07  
19:07  
19:08

Lashawnda A Settlements BUYIN123  
Sure, let me take a look

Lashawnda A viewed Transaction details - GT445GLVC.pdf version 1

Great thanks, I'll leave you with the flag

Lashawnda A Settlements BUYIN123  
Attachment Transaction details - G245FSHL.pdf version 1

Please see attached the final buy-in details

Add Filter

			Identifier	State	Need by	Parties	Unread	Topic	Last Message
<input type="checkbox"/>	1		JKKJCC	<span style="background-color: #ff5722; color: white; padding: 0 5px; font-weight: bold;">Pending</span>	12-Sep-19 12:59	Seller,Buyer,CSD		Unmatched instruction	Corie C marked the Issue as Pending
<input type="checkbox"/>	2		N9Z2UN	<span style="background-color: #4caf50; color: white; padding: 0 5px; font-weight: bold;">In Progress</span>	16-Sep-19 13:00	Buyer,Buy In Agent		Unmatched instruction - buy-in	Thank you. We will cancel our original trade
<input type="checkbox"/>			VRCH3D	<span style="background-color: #4caf50; color: white; padding: 0 5px; font-weight: bold;">In Progress</span>		Buyer,Seller	<span style="background-color: #ff5722; color: white; padding: 0 5px; font-weight: bold;">3</span>	Trade issue - YSH28H	Kyla C assigned lead for Seller to Kyla C
<input type="checkbox"/>			6TG3LZ	<span style="background-color: #4caf50; color: white; padding: 0 5px; font-weight: bold;">In Progress</span>		Buyer,Clearing House Local	<span style="background-color: #ff5722; color: white; padding: 0 5px; font-weight: bold;">4</span>	Gilt request	I'll invite my manage into the bubble to discuss
<input type="checkbox"/>			3ARVWZ	<span style="background-color: #ff5722; color: white; padding: 0 5px; font-weight: bold;">Pending</span>		Buyer,Seller		Unmatched Trade	Thanks - give me a couple of minutes to look this up

Archive

Transfer

Finish

Resume

Request

Assign

...

5 Bubbles

## QUESTIONS?

For more information please contact Fadi Maalouf, Head of Sales at [fadi.maalouf@taskize.com](mailto:fadi.maalouf@taskize.com) or visit [www.taskize.com](http://www.taskize.com).



## ABOUT

Terranoha is a ultra-low-latency worldwide financial connectivity provider. With more than 80 pre-connected execution venues and 18 physical servers' implantations in the most important exchanges and marketplaces around the globe linking to a market proven global network and a solid and reliable 24/7 customer support, Terranoha aims at providing the best low latency connectivity service.

## QUESTIONS?

For more information please visit <https://terrano.com/>.